

# Beat the Heat.

## Temperature Monitoring Solutions.

Powered by:  Rivercity  
Innovations

Solution Overview



Available in Black or White



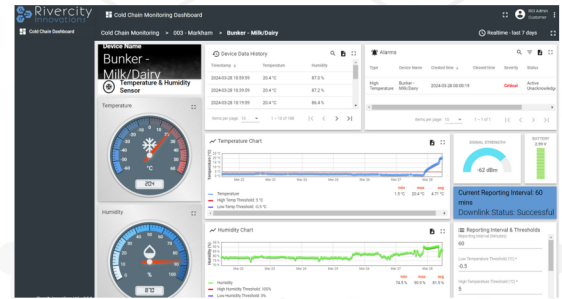
### TxH Sensors

1 per monitored zone



### Gateway

1 per location



### Dashboard

Available in EN, FR, SP

## Applications



Pharmacy medication refrigeration monitoring



Grocery refrigeration and cold room storage monitoring



Restaurant food storage monitoring



Temperature monitoring for Last Mile Delivery

## Features



- Pre-calibrated TxH temperature sensors
- Saves data even during a network outage or power failure
- Set your alarm thresholds for each sensor in the app
- Temperature and humidity monitoring checked every 1-minute, 24 hours a day.
- Magnetic installation and activation
- Waterproof vents to allow airflow for the humidity sensor while maintaining a waterproof seal
- Gateway connected with cellular or ethernet
- Automatic reports configurable to your needs
- Role based security controls for users and stores

## Installation

The TxH sensor has magnets on the back of the enclosure (on the inside of the lid) for easy installation. Place the sensor on a magnetic surface for quick installation, or use screws (provided) with the flanges for a permanent installation. The TxH has a built-in battery that provides up to 10 years of battery life and powers on and off using a small magnet.

### Connectivity

LoRaWAN	US915, EU868, 1.0.3A
Data Backup	500 Records
Max Transmit Power	20dBm (US915), 16 dBm (EU868)
Range	Up to 2km / 1 mi city, 30km / 18 mi line of sight

### Electric

Battery	3V 2/3A Li-MnO2
Battery Life	Up to 10 years*
Transmit Current	100 mA (max)
Sleep Current	3 uA

\*1 hour transmit interval, 60 second measurement interval, SF10, 20dBm

### Physical/Mechanical Design

Dimensions	71 x 36 x 29 mm / 2.8 x 1.4 x 1.1 in
Mass	84g / 3.0 oz
IP Rating	IP65
Operating Temperature	-40°C to +85°C / -40°F to +185°F

### Sensors

Temperature Accuracy	Up to 0.2°C / Up to 0.3°F
Humidity Accuracy	Up to 2%

### Certifications

Compliance	FCC IC	ROHS CE
Temperature Accuracy	EN 12830	ISO 17025

